

A horizontal bar with three colored segments: yellow, pink, and blue.

# METRO SERVICE AREAS



Roland DG **Care**

# METRO SERVICE AREA BOUNDARIES

## **NEW SOUTH WALES**

Sydney

Central Coast (excl. Newcastle)

Woolongong

## **VICTORIA**

Melbourne

Geelong

## **QUEENSLAND**

Brisbane

Gold Coast

Sunshine Coast

## **AUSTRALIAN CAPITAL TERRITORY**

Canberra

## **SOUTH AUSTRALIA**

Adelaide

## **WESTERN AUSTRALIA**

Perth

## **TASMANIA**

Hobart

Launceston

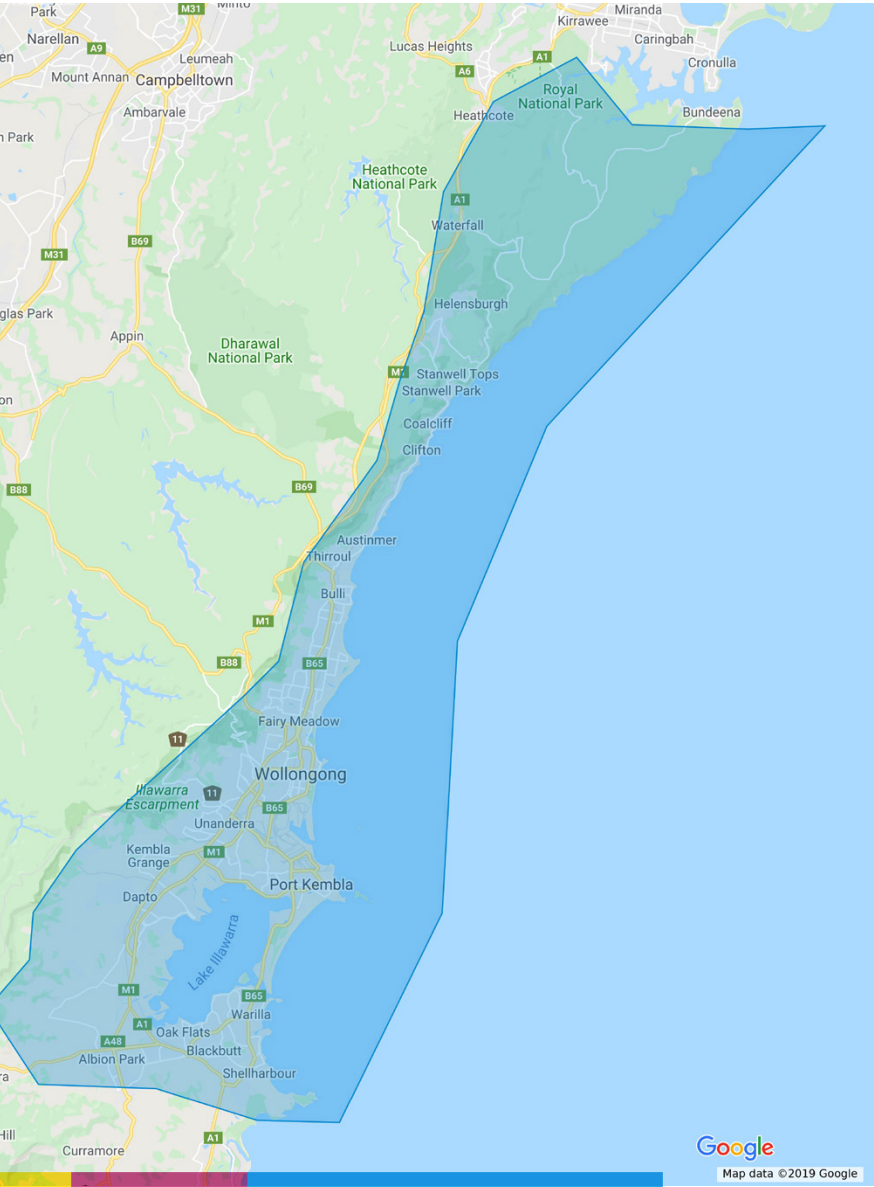
## **NORTHERN TERRITORY**

Darwin

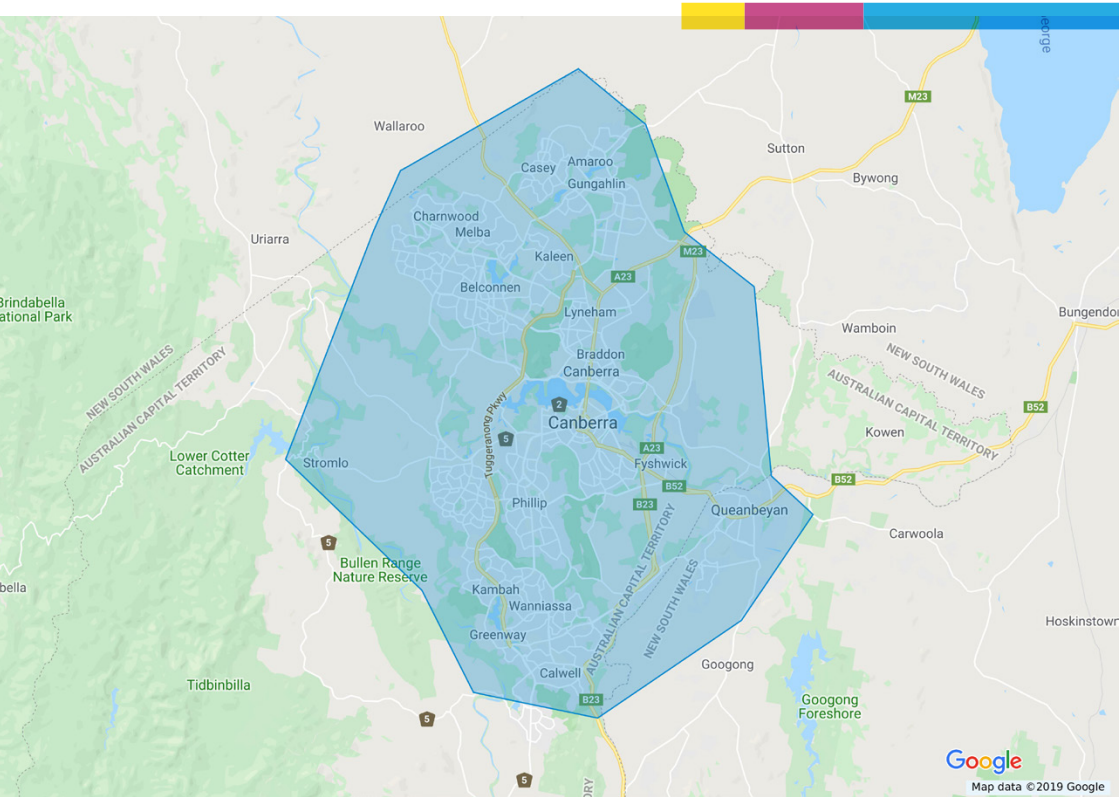




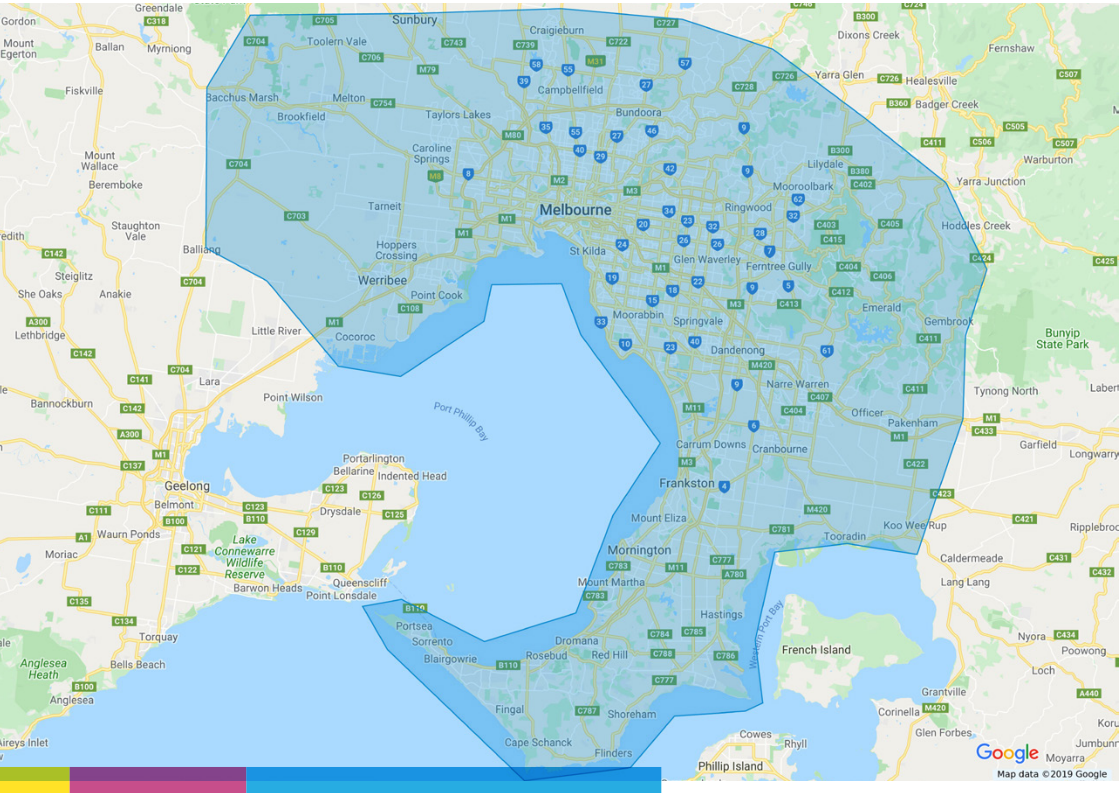




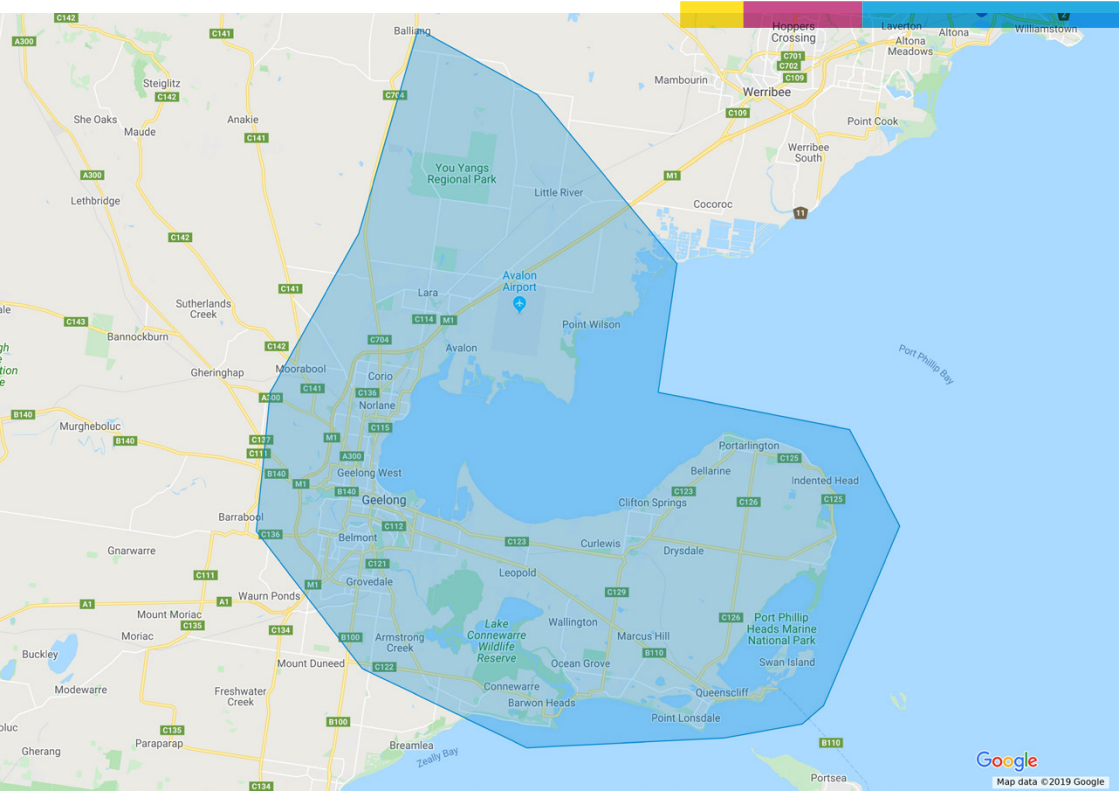
## Canberra



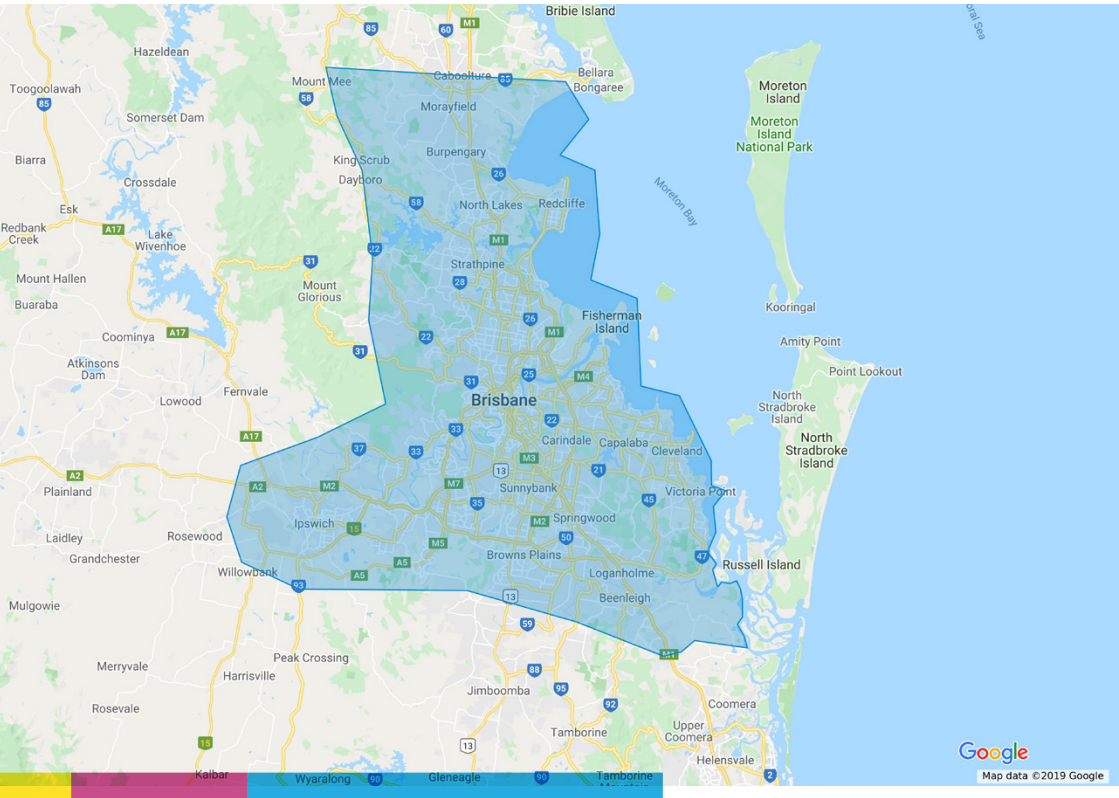
## Melbourne Metro



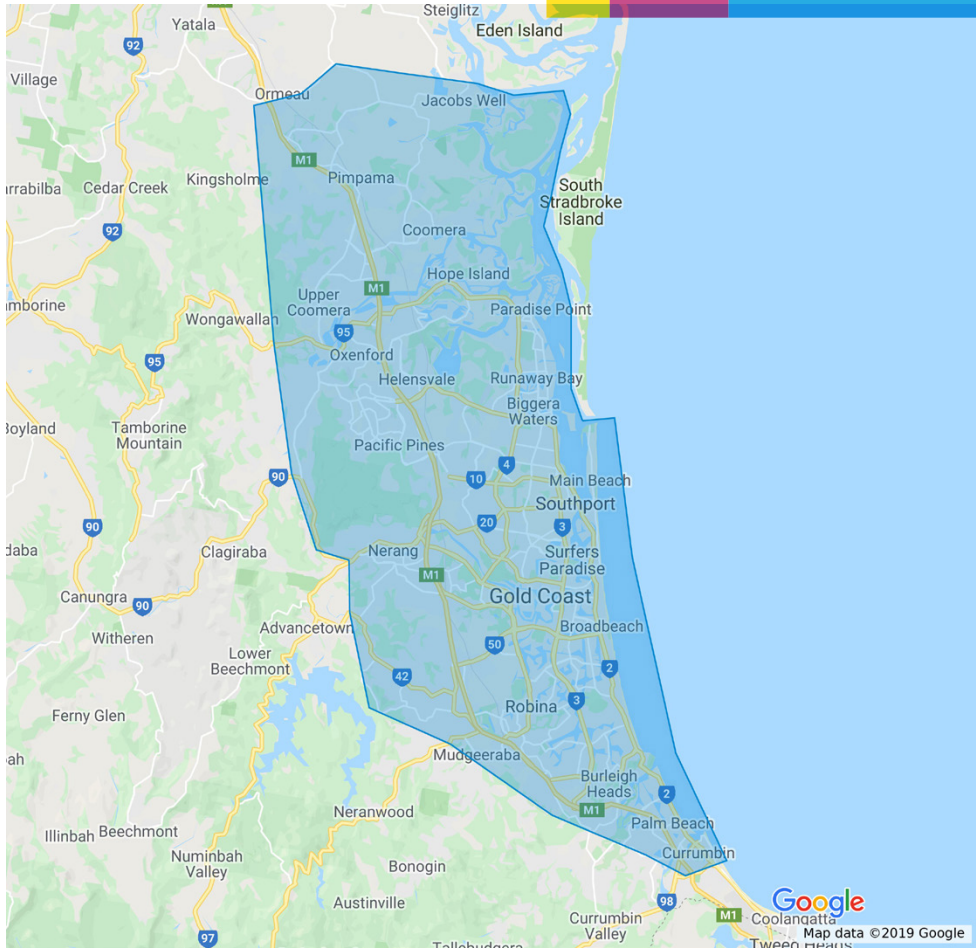
## Geelong



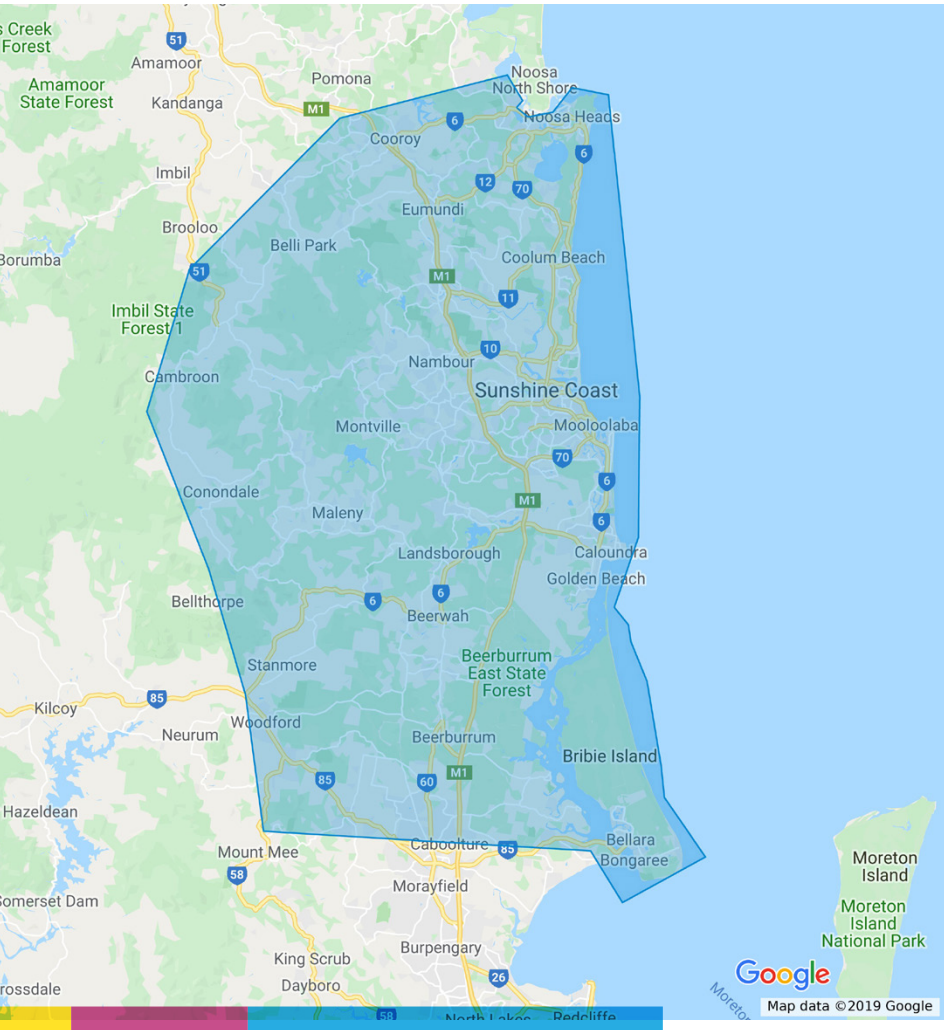
## Brisbane Metro



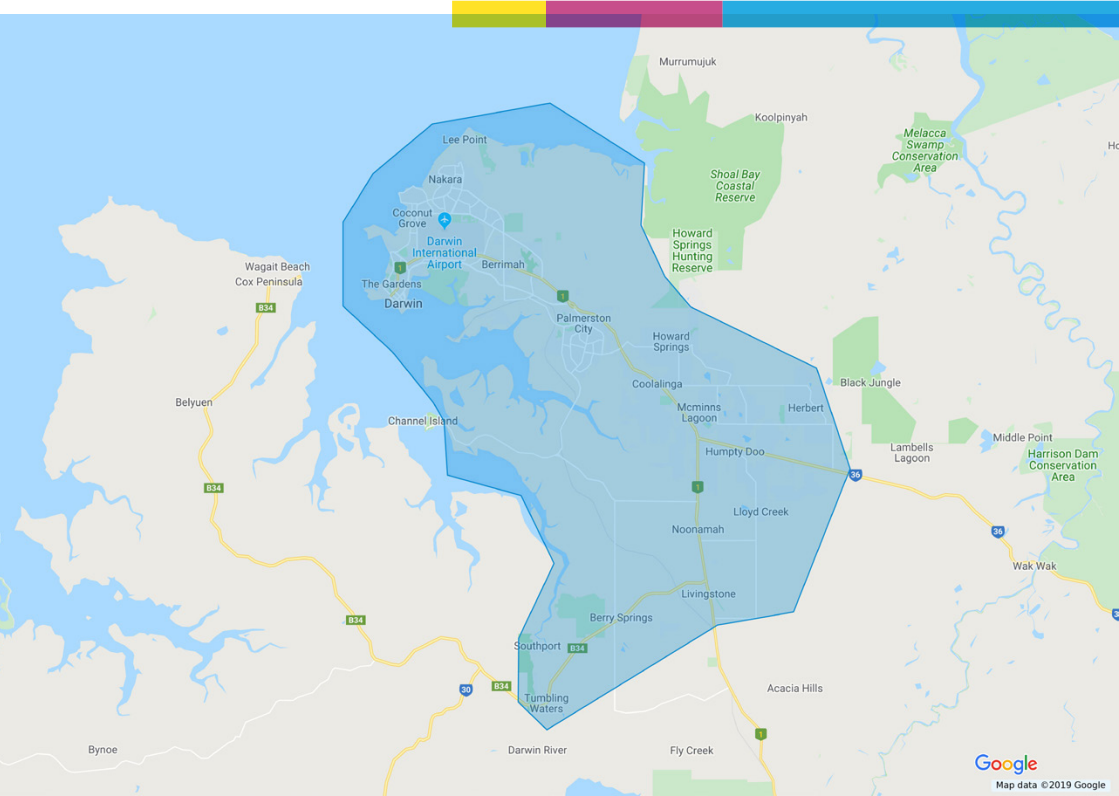
## Gold Coast



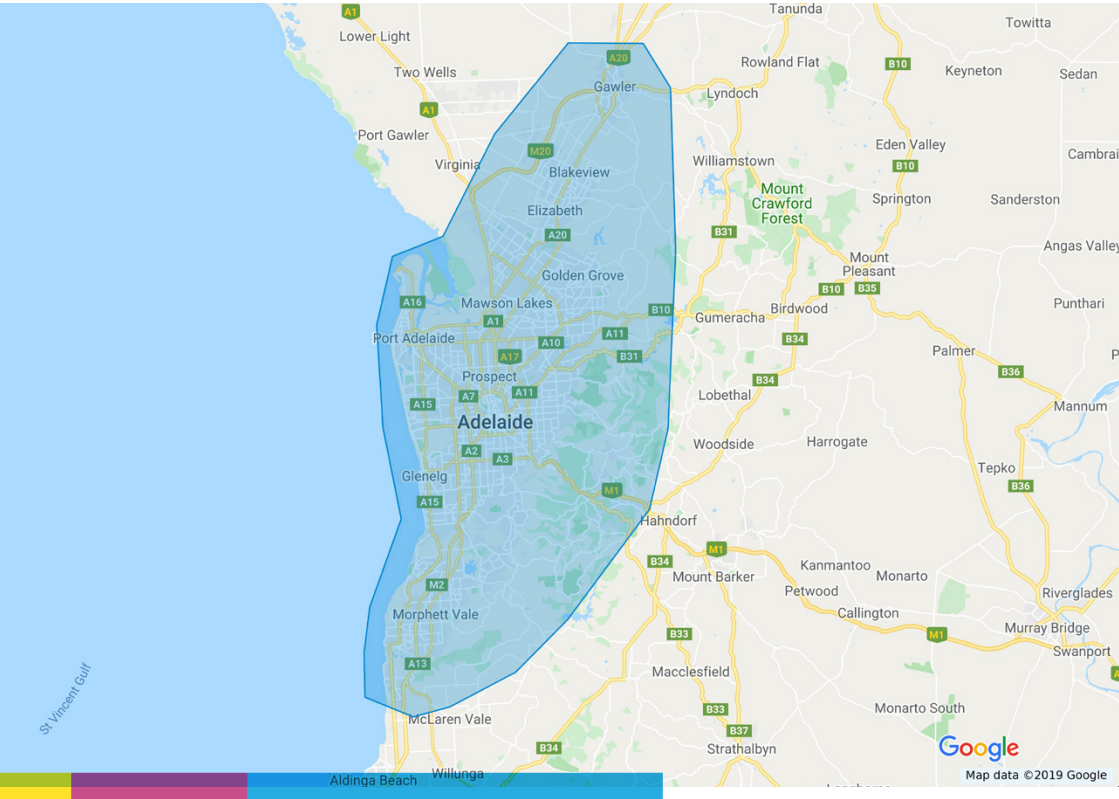
## Sunshine Coast



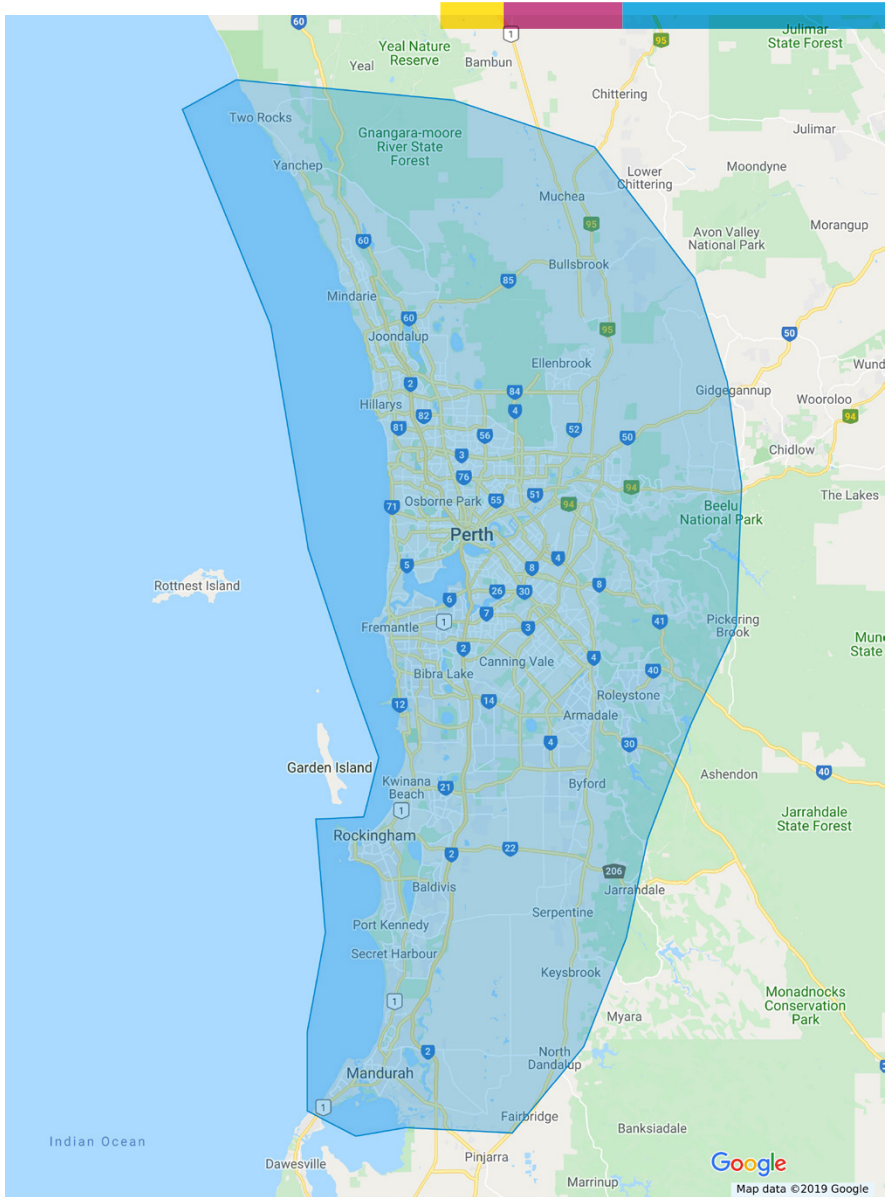
## Darwin



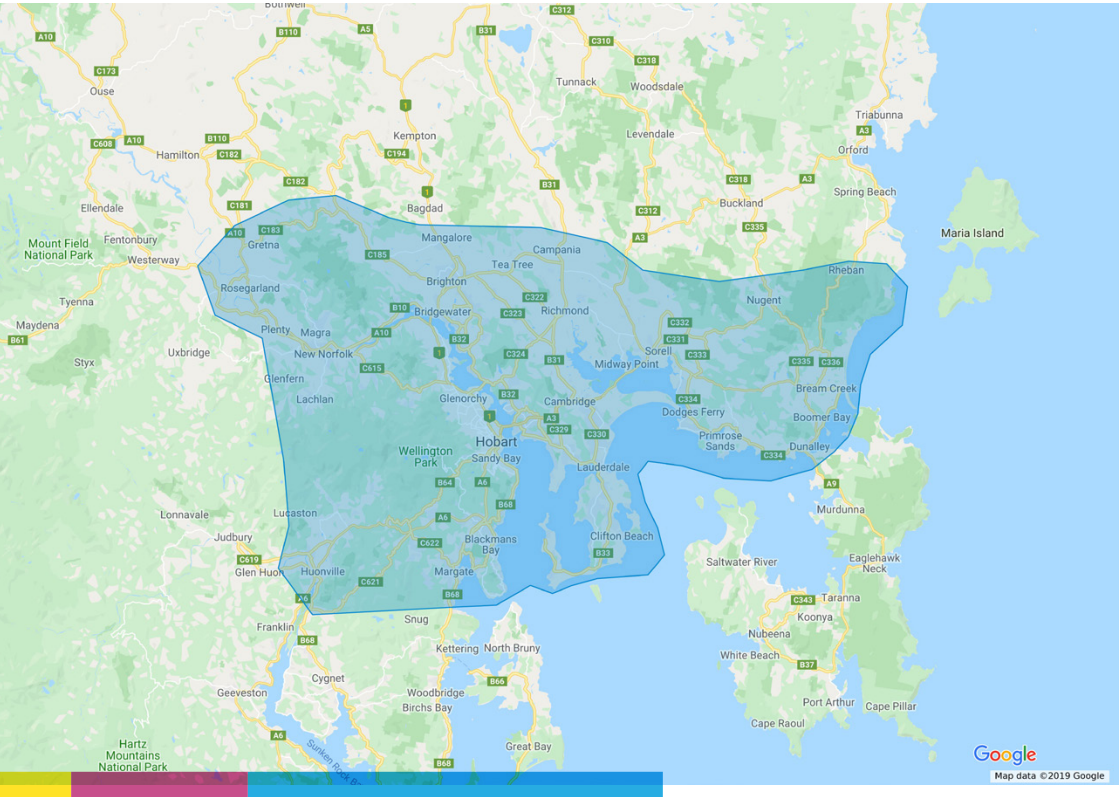
## Adelaide



## Perth

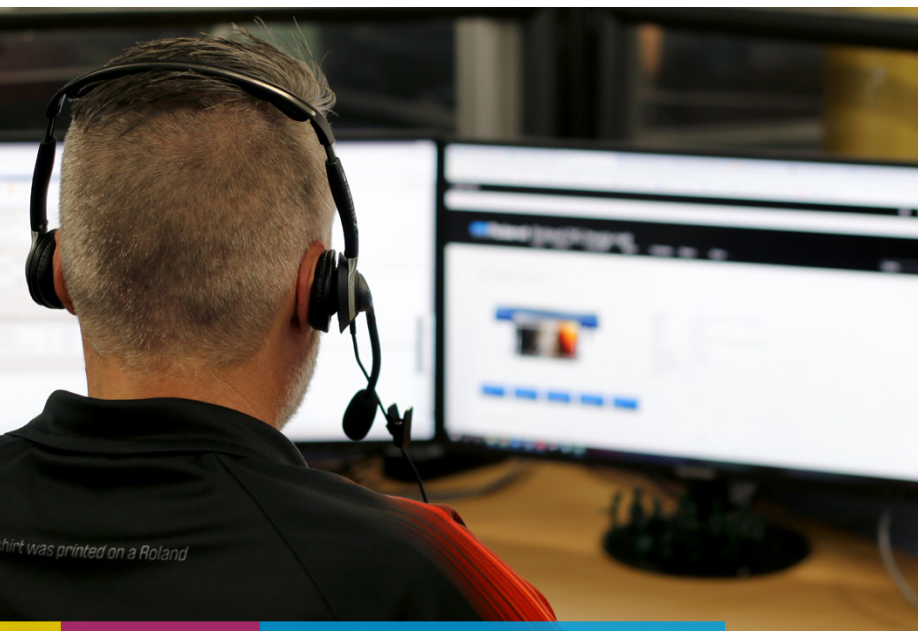


## Hobart



# Warranty Statement

<https://www.rolanddg.com.au/support/warranties/warranty-statement>



*shirt was printed on a Roland*

Online: [www.rolanddg.com.au/support](http://www.rolanddg.com.au/support)

Email: [support@rolanddg.com.au](mailto:support@rolanddg.com.au)

Phone: **02 9975 0000**

 **Roland**

02 9975 0000

[support@rolanddg.com.au](mailto:support@rolanddg.com.au)

[www.rolanddg.com.au](http://www.rolanddg.com.au)